

Dosaji Elesol



Dosaji

Technologies

HUSSAIN UKANI
Managing Director

Corporate Office :
UKANI TOWER, Opp. Church, M.G. Road,
Chandrapur - 442 402 (M.S) INDIA
Phone No : +91 7588656703
email : hussainukani@gmail.com
marketing@dosajielesol.in

Marketing Office :
1st Floor, Patel Building
Central Avenue off Road,
Behind Karur Vysya Bank,
Nagpur 440 018 (M.S.) INDIA
www.dosajielesol.in

Simplicity is key. A solution for the lifetime.

Our aim is to contribute to energy conservation by reducing electricity waste close to zero. Clients from all across the world are pleased with their experience to use energy more efficiently. Even companies, which have already implemented a variety of energy saving measures, will see further reductions in their electricity bill by implementing elesol. By spreading more awareness about reducing energy waste, we fight for more environmental consciousness and a better future for our planet.

Dosaji



01

ABOUT THE PRODUCT

The newly developed elesol is a ceramic-based plate, which is composed of various metals. It is not an electronic product, hence it does not require any sort of power supply. The plates filter high-frequency noise and prevent the emission of harmful electromagnetic waves, which are responsible for additional power consumption.

Product Specifications

Body dimensions	50mm width × 3.5mm depth × 25mm height
Product weight	Approximately 20g
Power supply	Unnecessary
Color	White



Dosaji



What Is noise?

Resistance within the electric current comes in many forms, one of them being referred to as noise. High-frequency noise can be generated by machines and other equipment inside our client's facility. It negatively affects the circuit and causes additional energy consumption. Monthly electricity bills will increase, and users are paying for excessive energy which they are not using.

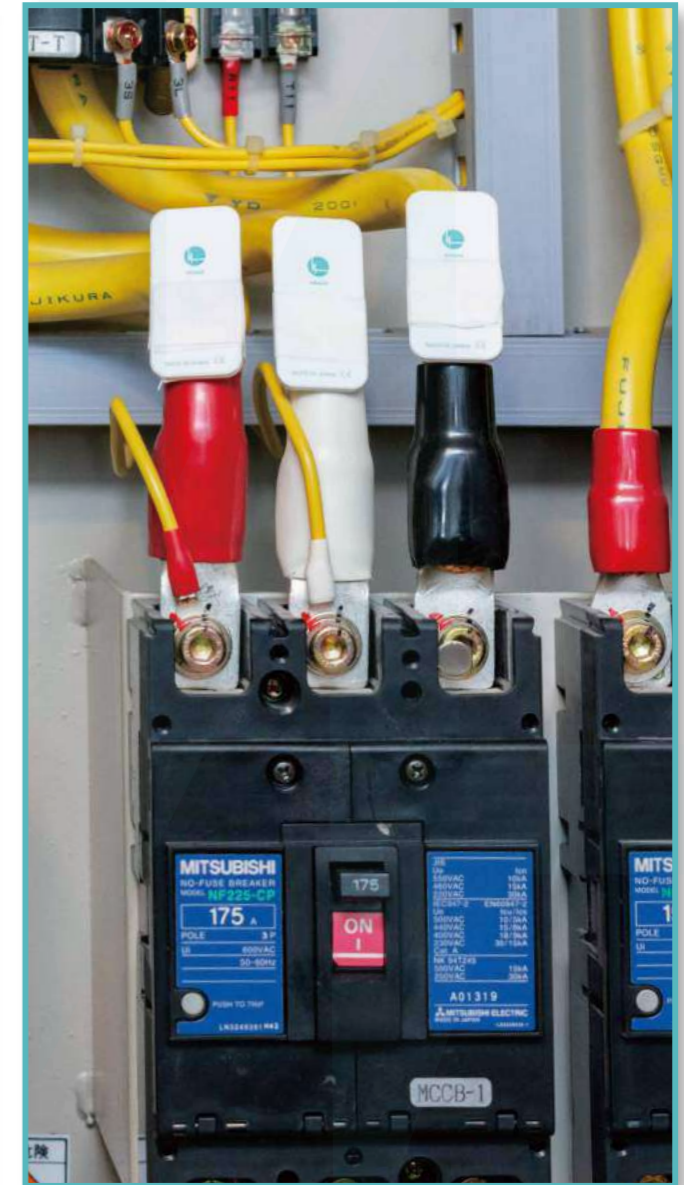
02

CONVENIENCE OF ELESOL

Elesol does not require any electrical construction work for installation nor a regular maintenance. The product can be installed when the power supply is still running, thus there is no need to shut down utilities. The plates solely have to be attached to the outgoing phases of the circuit breakers (the number of plates vary according to the breaker type). Clients will be able to start saving their monthly electricity bill immediately.



INSTALLATION METHOD



03

ELESOL MECHANISM

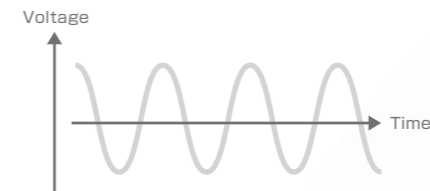
Our product can reduce electricity consumption by installing it to the circuit breaker. The explanation of the mechanism is as follows .



MECHANISM 01

The power supply in most normal companies, factories, homes etc. is delivered by the **“alternating current”**.

What is an Alternating Current?



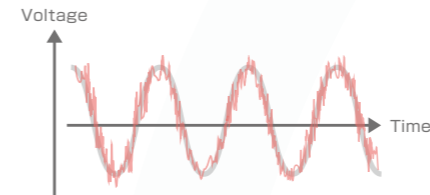
POINT

Alternating current: Periodically reverses direction
Direct Current: Constant flow

MECHANISM 02

The **high-frequency “noise”** flows along with the electric current wave.

Time when noise occurs



POINT

Electrical interference, also known as “noise”, can be created by electrical devices.

MECHANISM 03

You can remove the noise through a **“filter effect”** by installing elesol.

Filter effect



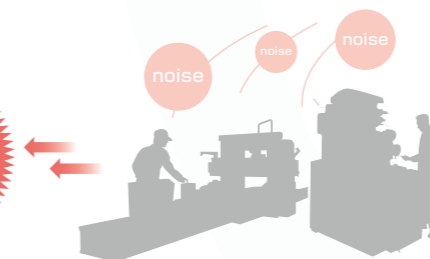
POINT

After installing elesol, the electric current will be cleaned.

MECHANISM 04

High presence of noise means that more **electromagnetic waves** are wasted in the air.

Electromagnetic wave generation



POINT

A huge amount of electricity is wasted when electromagnetic waves are emitted in the air.
Example: Radio waves (Wi-Fi, BT Waves etc.)



SUMMARY

By filtering the noise, we are starting to suppress unnecessary electricity usage (which we pay for, but we don't use).



04

ELESOL VALIDATION DATA



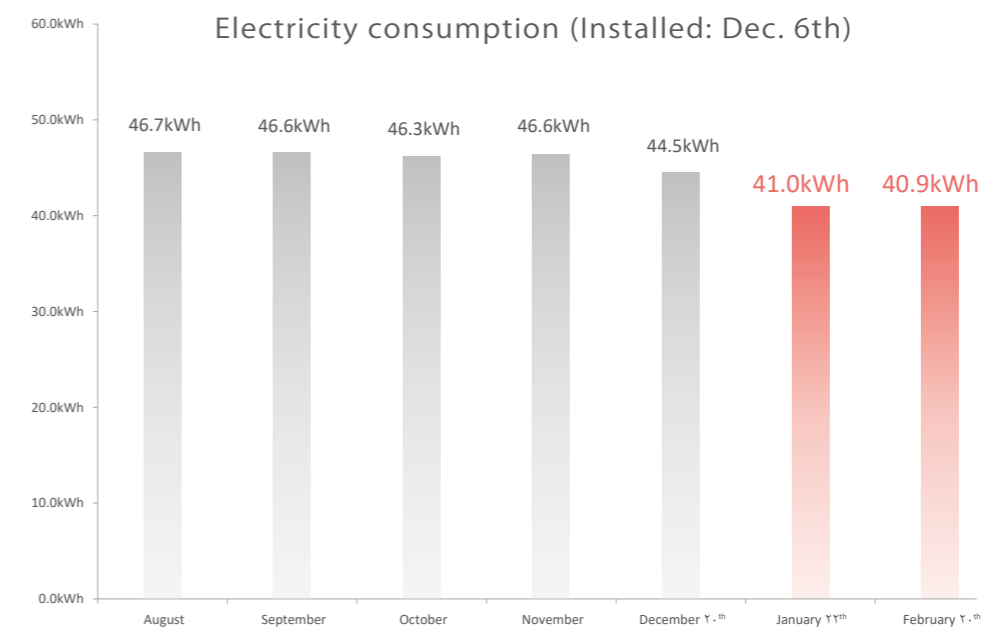
Discount store



Section **Bicycle parking lot** Total installed **1piece** No. of installation **1**

We carried out tests on levels of power consumption at a parking lot, where power usage does not fluctuate with the surrounding environment. The diagram on the right shows the power consumption trends before and after installing an elesol plate, from which it can be observed that there was a significant reduction in power consumption.

Category	Units	2016					2017	
		August	September	October	November	December 20 th	January 22 nd	February 20 th
Electricity consumption	kw/Month	1492.8kWh	1444.8kWh	1296.6kWh	1491.6kWh	1291.8kWh	1352.0kWh	1187.0kWh
Meter inspection frequency	Days	32 days	31 days	28 days	32 days	29 days	33 days	29 days
Electricity consumption / day	kw/Month	46.7kWh	46.6kWh	46.3kWh	46.6kWh	44.5kWh	41.0kWh	40.9kWh
Average consumption / day	kw/Month	46.1kWh					41.0kWh	
Reduction rate	%	-11.3%						



05

ELESOL VALIDATION DATA



The product is used in various industries in many regions.
We have received many positive feedbacks from customers
delighted about their electricity bill reduction.

Paper Mills Factory (Japan)

Reduction data Installation month (116 pieces / October)

	2017			2018			Compared to the same month	Reduction effect month
	Electricity consumption (kwh / month)	Reading days	Electricity consumption (kwh / day)	Electricity consumption (kwh / month)	Reading days	Electricity consumption (kwh / day)		
Jan	456,889	31	14,738	469,419	31	15,143	2.7%	Before 106.5%
Feb	514,619	29	17,745	514,538	28	18,376	3.5%	
Mar	524,937	31	16,933	573,170	31	18,489	9.1%	
Apr	477,635	30	15,921	485,417	30	16,181	1.6%	
May	421,601	31	13,600	425,784	31	13,735	1.0%	
Jun	459,547	30	15,318	464,445	30	15,482	1.0%	
Jul	506,967	31	16,354	519,071	31	16,744	2.4%	
Aug	427,079	31	13,777	479,635	31	15,472	12.3%	
Sep	438,402	30	14,613	463,708	30	15,457	5.8%	
Oct	425,789	31	13,735	400,139	31	12,908	-6.0%	After 92.7%
Nov	472,992	30	15,766	430,190	30	14,340	-9.0%	
Dec	456,982	31	14,741	426,669	31	13,764	-6.6%	

Reduction rate **13.9%** | Reduction amount **\$2,814 per month**

Transition of Electricity Consumption (kwh/day) — 2017/01~2017/12 — 2018/01~2018/12



06

FREQUENTLY ASKED QUESTIONS

Which industries are currently using elesol?

- Hardware manufacturing factories
- Printing companies
- Confectionery manufacturing companies
- Pharmaceutical companies
- Music production companies
- Television commercial production companies
- Design companies
- Internet advertising agencies
- System development companies
- Game development companies
- Application development companies
- Convenience stores
- Drugstores
- Karaoke stores
- Opticians
- Food and beverage chain stores
- Hamburger restaurants
- Coffee shops
- Logistic companies
- Internet cafes
- Sheet metal painting companies
- Parking management companies
- Accounting offices
- Real estate companies
- Magazine publishing companies
- Consulting companies
- Electric facility construction companies
- Cable TV broadcasting companies
- Special tanker transport companies
- Business hotels
- Pachinko parlors
- Hair Salons
- Apparel companies
- Professional sports game management companies
- Language schools
- Rental offices
- Nursing homes

01 I am using LED lights. Can I expect to see additional reductions in energy consumption?

Yes, companies can expect additional reductions in their **electricity bill** even if they are implementing LED lights, energy efficient circuit breakers, as well as cheaper electricity plans from electricity retailers.

02 How much energy savings can I expect?

You can expect an **average reduction of around 10-15%**. The reduction rate varies depending on the environment of the facility as well as on the condition of the machines used.

03 What is the lifespan of Elesol?

Elesol is not made out of electronic components/parts, thus it can be used **semi-permanently**.

04 How do you install Elesol?

Our staff or our local distributors who possess expert knowledge will **install elesol to the circuit breakers**. This process does not require any electrical wiring or construction, therefore there is no need to shut down the main power supply for installation.

05 Can I purchase Elesol instead of renting?

Yes. Please contact us if you wish to **purchase** the product.

06 Will Elesol harm electronic equipments and machines in use?

Elesol does not require any power therefore **it will not cause any harm to your circuit breaker nor will it damage electronic equipments and machines**.

Dosaji

Technologies Elesol

Corporate Office :

**UKANI TOWER, Opp. Church, M.G. Road,
Chandrapur - 442 402 (M.S) INDIA
Phone No : +91 7588656703**

**EMAIL : hussainukani@gmail.com
marketing@dosajielesol.in**



Marketing Office :

**1st Floor, Patel Building
Central Avenue off Road,
Behind Karur Vysya Bank,
Nagpur 440 018 (M.S.) INDIA**

www.dosajielesol.in